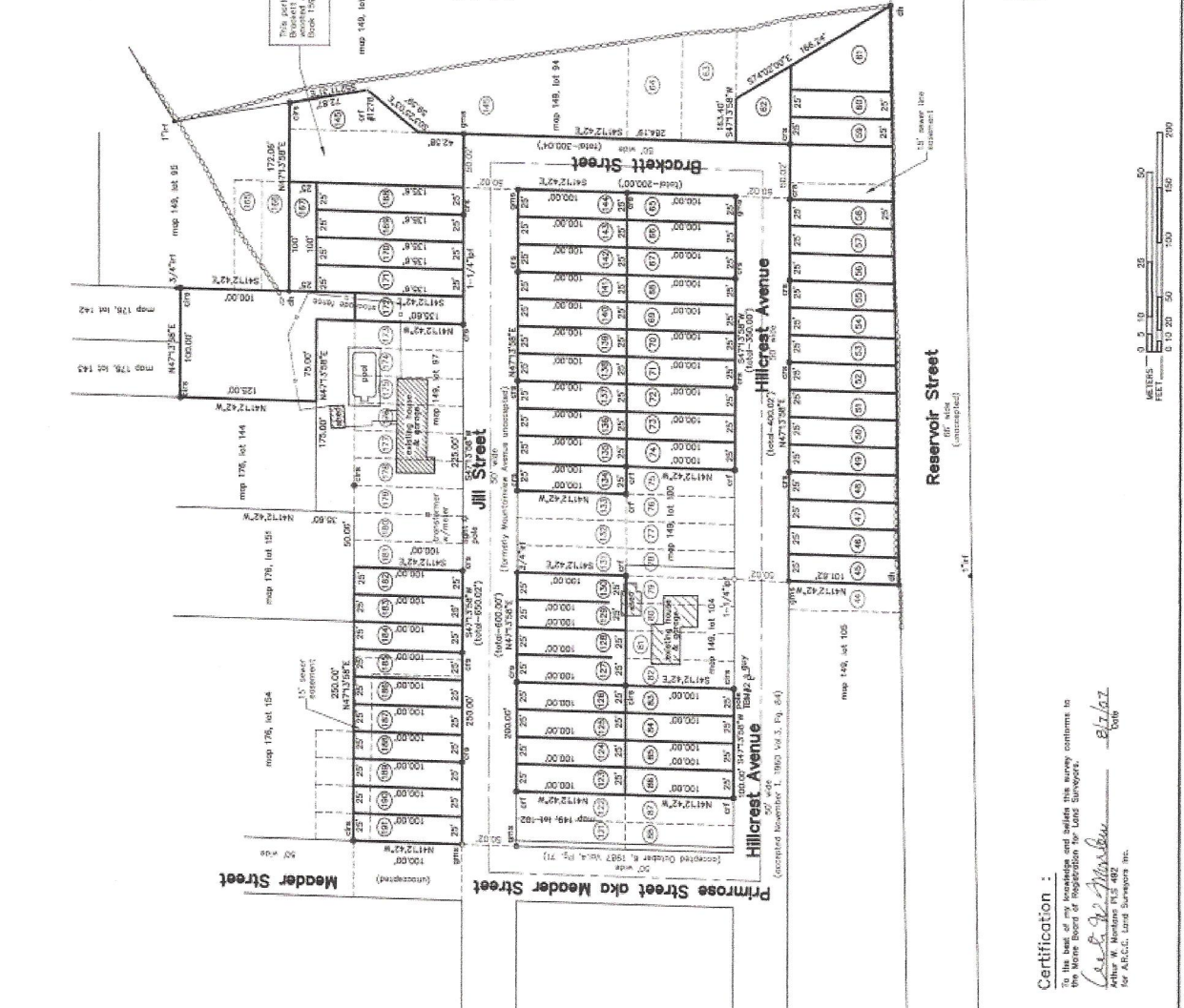


This site was prepared under the responsibility of
 Arthur W. Marston P.E. 482, 110, 100, 604
 Auburn, Maine.
 Received August 8, 2007
 and Reopened in May 2008
 Allot *Carlyle Christopher's land* Page 118
 Request Inspector

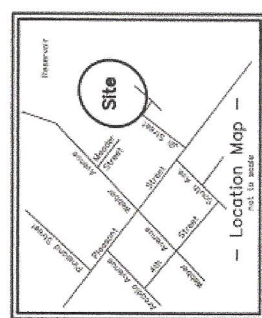


Notes:
 1. All Block and Chain Numbers refer to the Androscoggin County Registry of Deeds.
 2. Property line with the Neighborhood Conservation "X" Zone. Spore & Bulk Standards - single family detached dwelling:
 a. minimum front yard = 20 feet.
 b. minimum side & rear setback = 10 feet.
 c. minimum side & rear porch = 10 feet.
 3. The property shown on this map is located Zone 2 per the City of Lewiston Flood Hazard and Floodway Map, second date September 28, 1974.
 4. Reference of W.E. Webber, Lewiston, Maine, by CH 4814, Barton, Engineers, Lewiston, Maine, recorded in the Androscoggin County Registry of Deeds, Volume 2, Book 5, Page 118, through County book of plans, Section One, Webber Avenue Subdivision dated June 9, 1989 on 110 of the lot in the City of Lewiston, Maine.
 5. Lines shown on this map are not shown on any other zoning or tax maps and are not verified by this survey.
 6. Source cited - Lewiston and Limestone Landmarks, Inc. by Lewiston and Limestone Landmarks, Inc. recorded in the Androscoggin County Registry of Deeds, Volume 2, Book 220.
 7. The purpose of this plan is to show the monumentation and existing buildings.

Block	Chain	Area	Area	Area
178/143	178/143	178/143	178/143	178/143
178/144	178/144	178/144	178/144	178/144
178/145	178/145	178/145	178/145	178/145
178/146	178/146	178/146	178/146	178/146
178/147	178/147	178/147	178/147	178/147
178/148	178/148	178/148	178/148	178/148
178/149	178/149	178/149	178/149	178/149
178/150	178/150	178/150	178/150	178/150
178/151	178/151	178/151	178/151	178/151
178/152	178/152	178/152	178/152	178/152
178/153	178/153	178/153	178/153	178/153
178/154	178/154	178/154	178/154	178/154
178/155	178/155	178/155	178/155	178/155
178/156	178/156	178/156	178/156	178/156
178/157	178/157	178/157	178/157	178/157
178/158	178/158	178/158	178/158	178/158
178/159	178/159	178/159	178/159	178/159
178/160	178/160	178/160	178/160	178/160
178/161	178/161	178/161	178/161	178/161
178/162	178/162	178/162	178/162	178/162
178/163	178/163	178/163	178/163	178/163
178/164	178/164	178/164	178/164	178/164
178/165	178/165	178/165	178/165	178/165
178/166	178/166	178/166	178/166	178/166
178/167	178/167	178/167	178/167	178/167
178/168	178/168	178/168	178/168	178/168
178/169	178/169	178/169	178/169	178/169
178/170	178/170	178/170	178/170	178/170
178/171	178/171	178/171	178/171	178/171
178/172	178/172	178/172	178/172	178/172
178/173	178/173	178/173	178/173	178/173
178/174	178/174	178/174	178/174	178/174
178/175	178/175	178/175	178/175	178/175
178/176	178/176	178/176	178/176	178/176
178/177	178/177	178/177	178/177	178/177
178/178	178/178	178/178	178/178	178/178
178/179	178/179	178/179	178/179	178/179
178/180	178/180	178/180	178/180	178/180
178/181	178/181	178/181	178/181	178/181
178/182	178/182	178/182	178/182	178/182
178/183	178/183	178/183	178/183	178/183
178/184	178/184	178/184	178/184	178/184
178/185	178/185	178/185	178/185	178/185
178/186	178/186	178/186	178/186	178/186
178/187	178/187	178/187	178/187	178/187
178/188	178/188	178/188	178/188	178/188
178/189	178/189	178/189	178/189	178/189
178/190	178/190	178/190	178/190	178/190
178/191	178/191	178/191	178/191	178/191
178/192	178/192	178/192	178/192	178/192
178/193	178/193	178/193	178/193	178/193
178/194	178/194	178/194	178/194	178/194
178/195	178/195	178/195	178/195	178/195
178/196	178/196	178/196	178/196	178/196
178/197	178/197	178/197	178/197	178/197
178/198	178/198	178/198	178/198	178/198
178/199	178/199	178/199	178/199	178/199
178/200	178/200	178/200	178/200	178/200

B46
P118

Certification:
 To the best of my knowledge and belief this survey conforms to the More Board of Registration for Land Surveyors.
 Arthur W. Marston P.E. 482
 Date: 8/16/07
 for A.R.C.C. Land Surveyors Inc.



- Legend:**
- Two pipe found
 - Iron rod found
 - capped rebar set 5/7/1989 L.D. #430
 - 4" hole in stone
 - capped rebar found 1/2007
 - capped 3/4" rebar set L.D. #432
 - 4"x4" granite monuments set
 - old lot numbers
 - old lot lines
 - stone wall
 - map 148, lot 98
 - map / old number per City's tax map