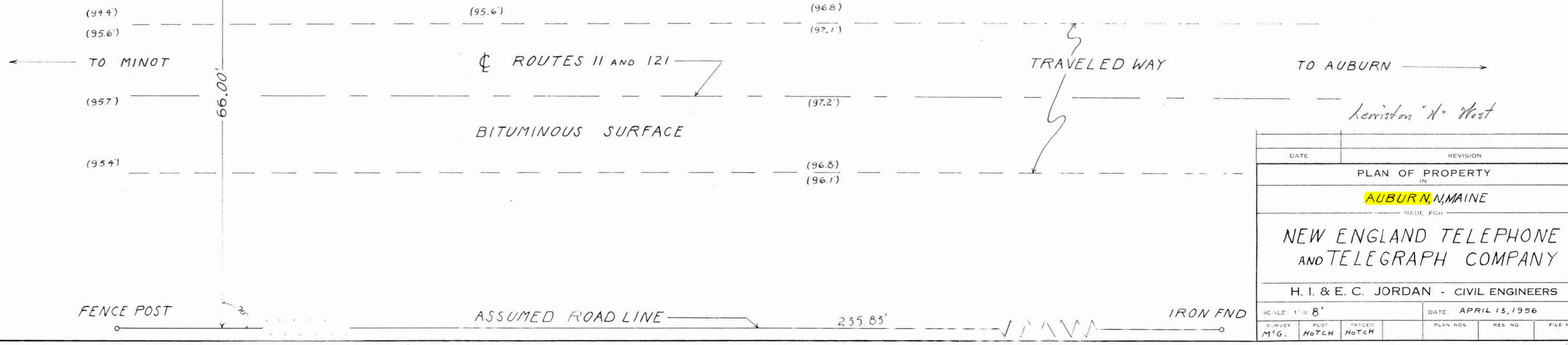


BM-SPIKE SET  
 ASSUMED ELEV. 100.0'  
 NET. & T. POLE # 124/169



*Kerston N. West*

DATE	REVISION
PLAN OF PROPERTY	
AUBURN, MAINE	
MADE FOR	
NEW ENGLAND TELEPHONE AND TELEGRAPH COMPANY	
H. I. & E. C. JORDAN - CIVIL ENGINEERS	
SCALE: 1" = 8'	DATE: APRIL 13, 1956
SURVEY M.G.	PLO. HOTCH TRACED HOTCH PLAN NOS RES NO FILE NO